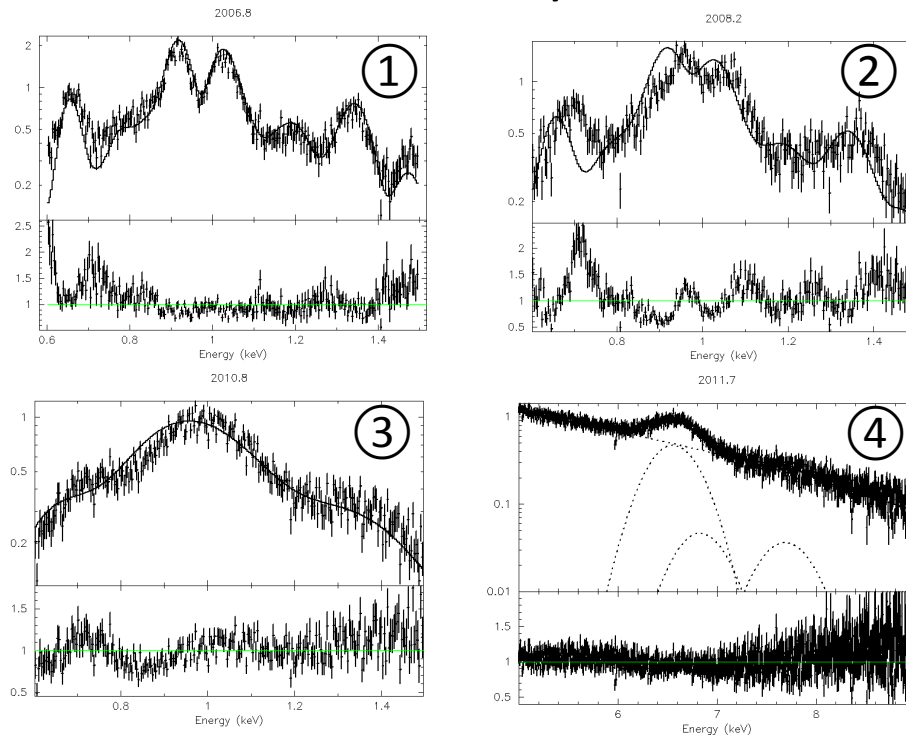


Release note: Update of the XIS P-sum mode calibration

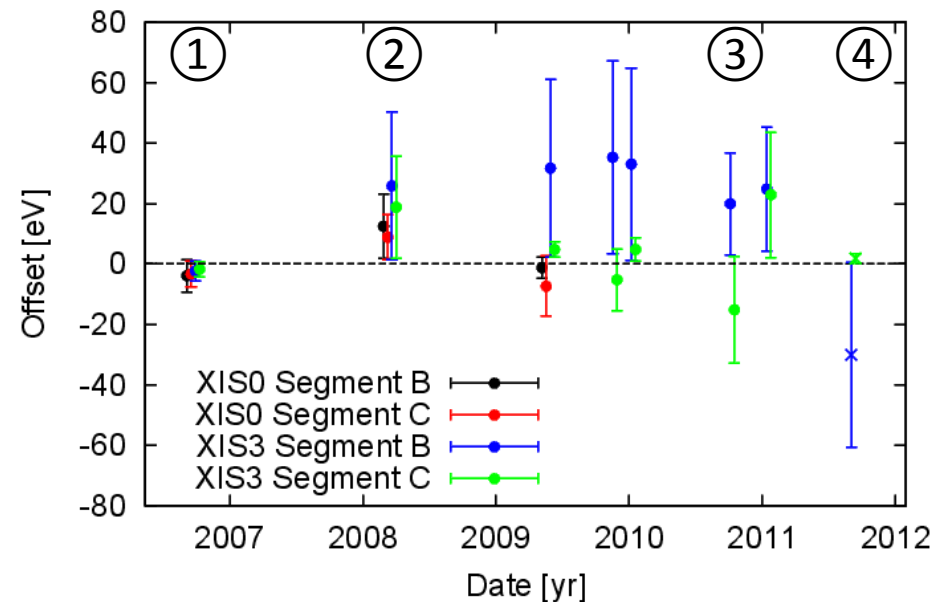
New makepi files -> ae_xi?_makepi_20140624.fits

New rmfparam files -> ae_xi?_rmfparam_20140624.fits

- The makepi and rmfparam files are updated to include the latest P-sum calibration results based on E0102-72 (XIS 0,3) and the Perseus cluster (XIS 3) data.
- P-sum calibration targets only for Segment B and C for XIS 0 (only until 2009/6) and of XIS 3.
- Perseus data are available only after 2011. Therefore, the XIS 0 calibration was only confirmed in the soft band using E0102-72.



The fitting results of E0102-72 (①, ②, ③) and Perseus cluster (④) on XIS 3 Segment B.



Offset between the spectra reprocessed with the new calibration files and the models